

MHC Class II beta Recombinant antibody

Cat: B35216D

Company: HaoKebio

Uniprot ID: P04440

Applications: IHC:1:100-1:200

Organism: Rabbit

IHC-Polymer:1:400-1:800

Species reactivity: Human

IHC-TSA:1:500-1:1000

Molecular Weight Calculation: 29 kDa

WB:1:1000-1:5000

Observed Molecular Weight: 29 kDa

Background:

HLA-DPB belongs to the HLA class II beta chain paralogues. This class II molecule is a heterodimer consisting of an alpha (DPA) and a beta chain (DPB), both anchored in the membrane. It plays a central role in the immune system by presenting peptides derived from extracellular proteins. Class II molecules are expressed in antigen presenting cells (APC: B lymphocytes, dendritic cells, macrophages). The beta chain is approximately 26-28 kDa and its gene contains 6 exons. Exon one encodes the leader peptide, exons 2 and 3 encode the two extracellular domains, exon 4 encodes the transmembrane domain and exon 5 encodes the cytoplasmic tail. Within the DP molecule both the alpha chain and the beta chain contain the polymorphisms specifying the peptide binding specificities, resulting in up to 4 different molecules.

Synonyms:

DPB1; HLA-DP; HLA-DPB; HLA-DP1B

Immunogen:

Recombinant protein

Isotype:

IgG

Subcellular location:

Membrane

Purity:

Affinity purification

Form:

Liquid

Storage Buffer:

PBS with 0.02% sodium azide, 100 µg/ml BSA and 50% glycerol.

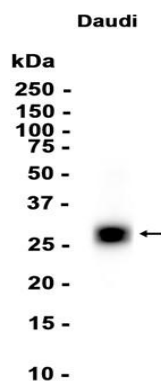
Storage:

Store at -20 °C for one year.

Experimental procedure:

Antigen retrieval: Citrate buffer (pH 9.0), Medium high heat for 8 minutes, stop for 7 minutes, medium high heat for 8 minutes. Incubate antibody, 4°C overnight. Secondary antibody: Poly-HRP Goat Anti-Rabbit & Mouse Universal Secondary Antibody, RT, 1h.

Images:



Dilution of 1:1000 incubated at room temperature for 1.5 hours.

Source of Reagents:

发表[中文论文]请标注:MHC Class II beta(B35216D)由杭州浩克生物技术有限公司提供;

发表[英文论文]请标注:MHC Class II beta(B35216D) were kindly provided by Hangzhou Haoke Biotechnology Co., Ltd.

